

Guide to Affix FAN

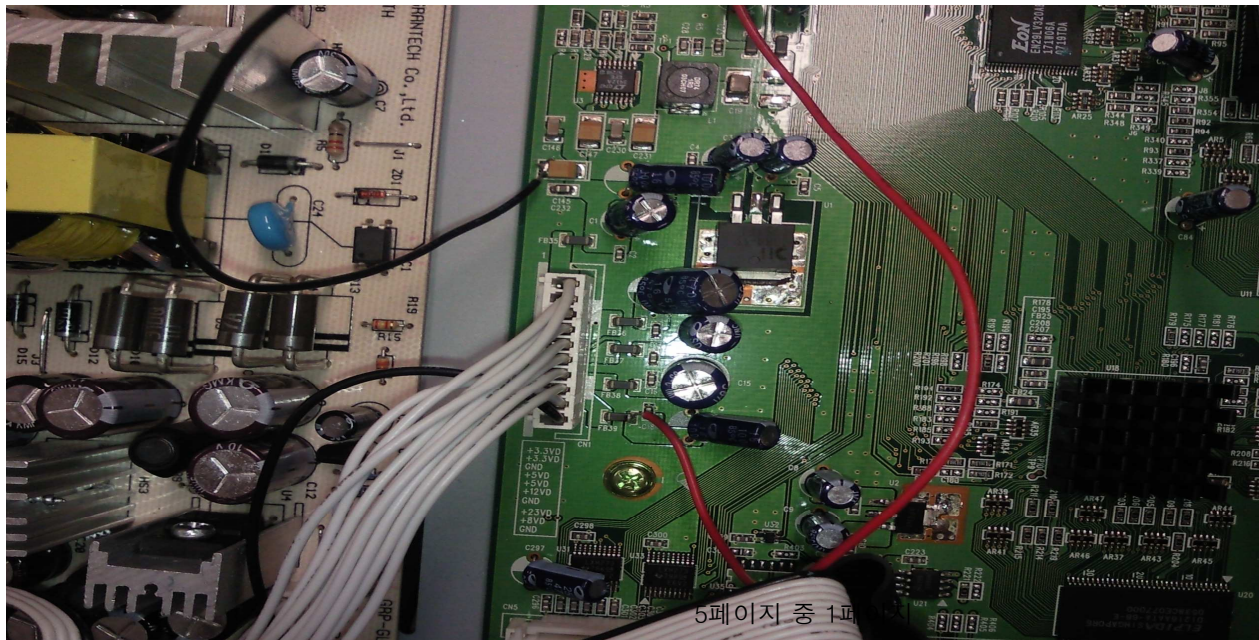
A. Test Result

Comarision	with Fan on HEAT SINK			without FAN on HEAT SINK		
Check Point	(1) MPEG IC	(2) Small size HEAT SINK on SMPS	(3) Large size HEAT SINK on SMPS	(1) MPEG IC	(2) Small size HEAT SINK on SMPS	(3) Large size HEAT SINK on SMPS
after 1 hr	48,6	52	43	65,6	62	58
after 2 hr	52,3	62	53	68,5	62	62
after 48 hr	52,3	62	53	71,5	68	65

Note : 1. After add FAN, the temperature decreased about 19 degree o CPU.

B. How to add the FAN

* FAN (YM1204PFS1 (40*10T) 12V 0.1A) E/C adapted POINT

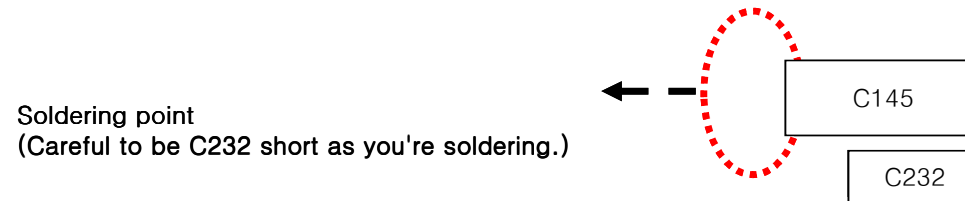




1. Connect red wire(300mm) to FB39.(soldering both red wire and FB39).



2. Connect black wire(300mm) to C145.(soldering both black wire and C145).

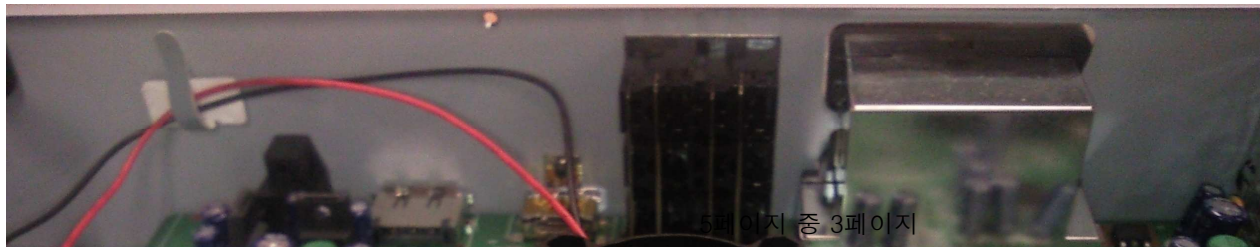
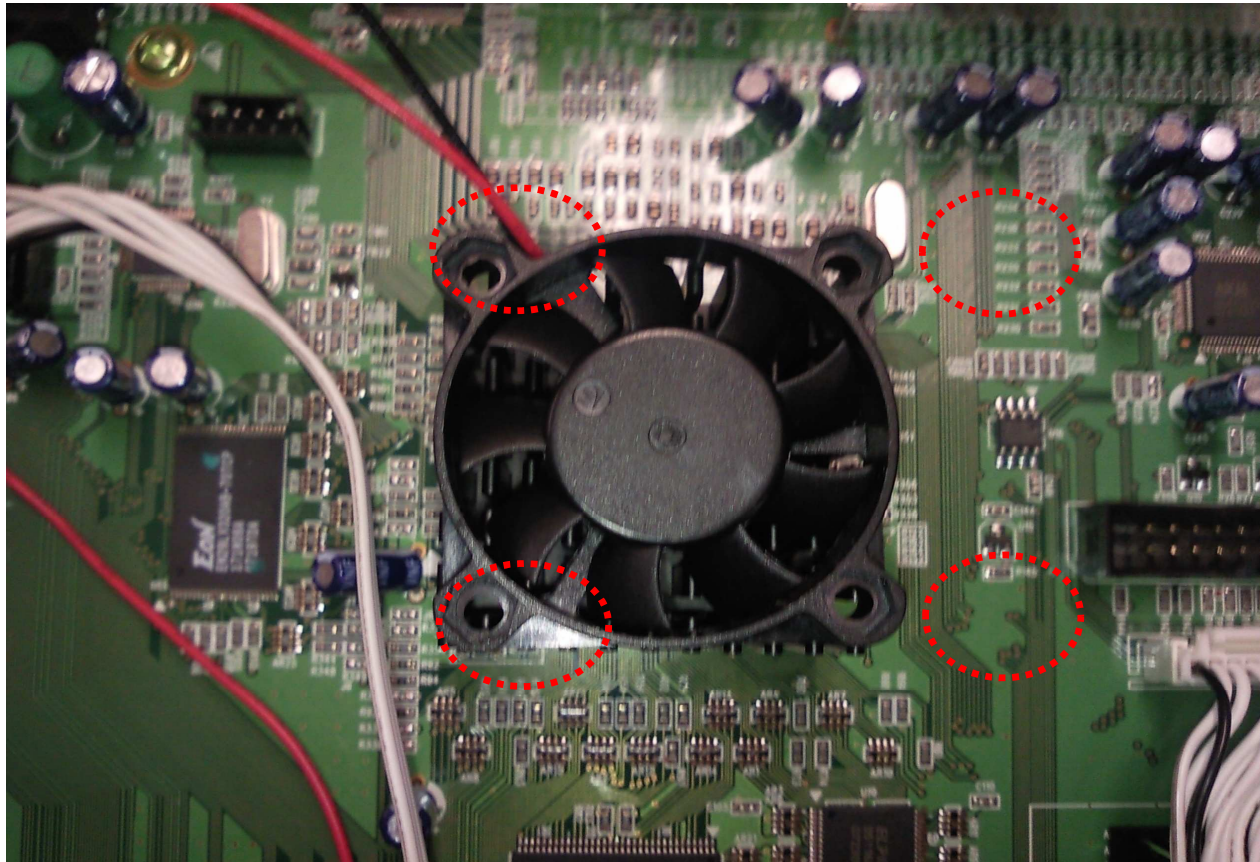


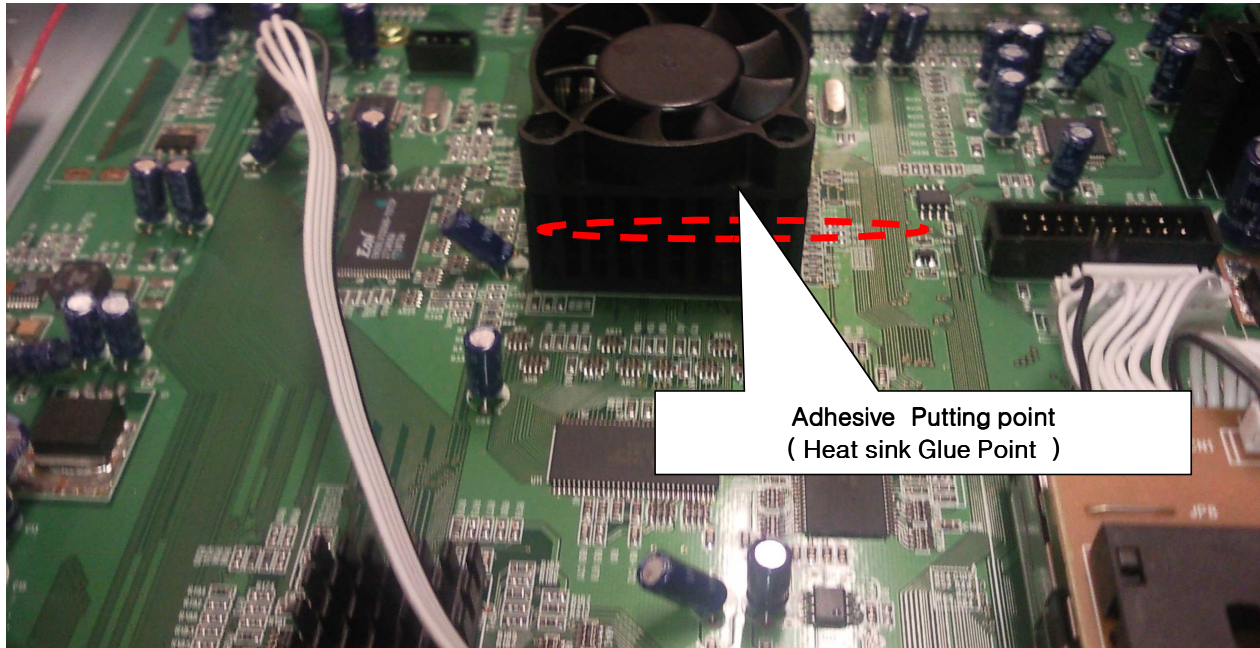
* Careful it not to be short with other point as you're soldering.

3. FAN shall be firmly affixed to the heat sink of CPU using adhesive(part : Dong Bu Bond, 603HFR-HS or others).

----- Adhsive (Max bond) standard Viscosity : 17,000~21,000(CPS) High Analysis : 42 ~ 46 Common Use : Fixing High Viscosity Cor

(putting Adhsive on the bottom of FAN, affix to heat sink of CPU.)





4. After all above, power up the set-top-box to check the operation of FAN.
5. If FAN has no problem in operation, fix the wires (red and black) to Real Panel.

